

# PUPPET RING

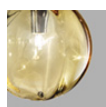
design Romani Saccani Architetti Associati 2019



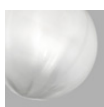
## Modello SP 15\_CE

The Puppet Ring collection is based on the idea of creating a frame by combining rings with different diameters, on which crystal balls in three sizes are mounted. The new three suspension lamps of different sizes and shapes also maintain a light and elegant aesthetic by ethereally combining crystal glass, smoked, amber and shaded white with gold and satin black nickel finishes.

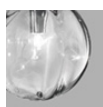
### GLASS FINISH



**AMTR**  
amber transparent



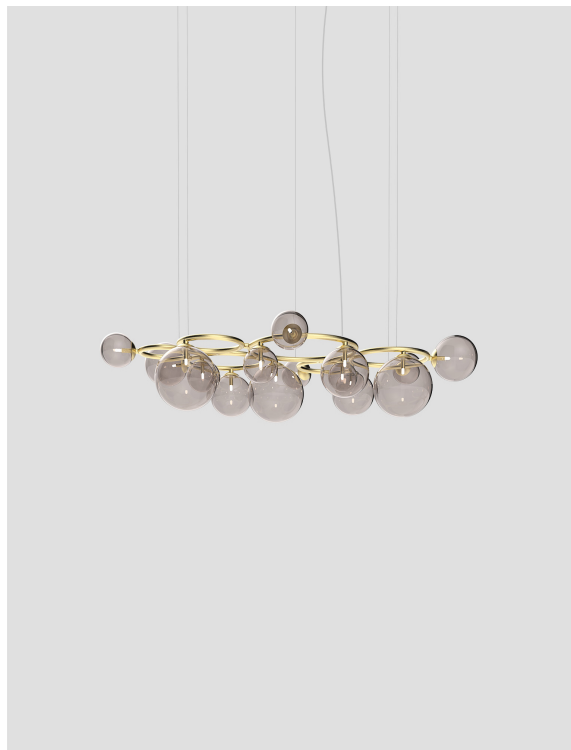
**BCSF**  
white shaded



**CRTR**  
crystal transparent



**FUTR**  
smoky transparent

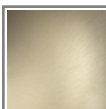


PUPRI SP 15 FUTR BKS G9 CE

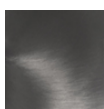
### LIGHT SOURCES

15x60W 220-240V 50/60 Hz G9

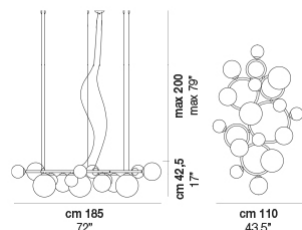
### FRAME FINISH



**BKS**  
matt gold 3



**NNS**  
matt black nickel



### TECH DATA



VOLUME: Mc 1,05

PACKAGE: N.11

NET WEIGHT: Kg 28,50

GROSS WEIGHT: Kg 44,00

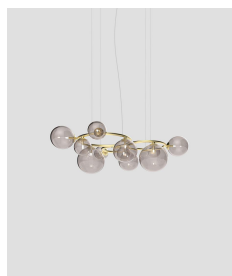
### CERTIFICATIONS

EU Cert



International Cert

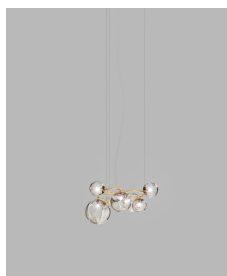
### OTHER VERSIONS AVAILABLE



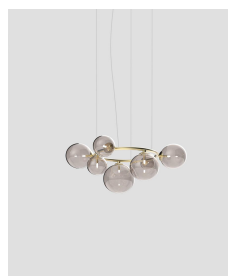
PUPRI SP 11



PUPRI SP 5



PUPRI SP 7



PUPRI SP 7A



PUPRI SP 9